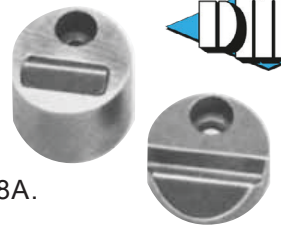


SLIDE LATCH

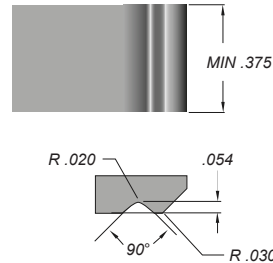
HIGH HARDNESS



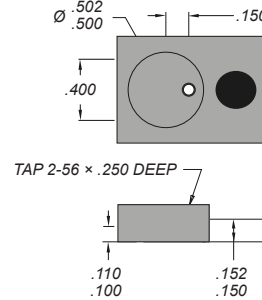
SLK-8-HH Rated to carry a weight up to 8 pounds. 100% interchangeable with SLK-8A.

INSTALLATION – LOCK

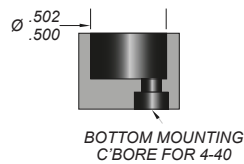
OPTION A MACHINED INTO SLIDE



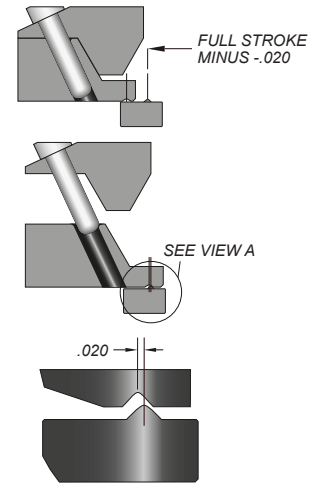
OPTION B LOCK INSERT



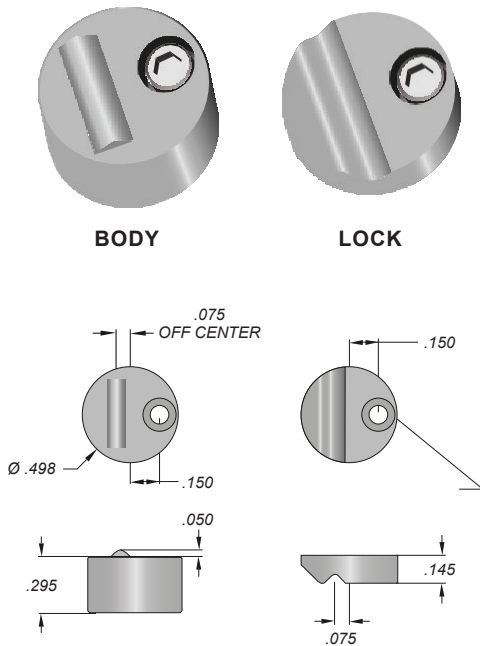
INSTALLATION – BODY



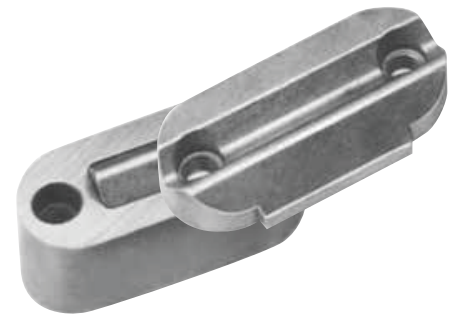
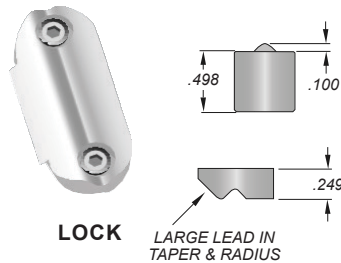
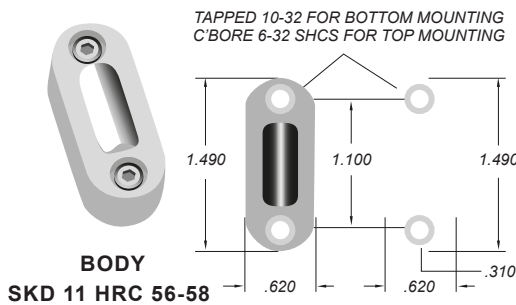
DESIGN GUIDELINES



NOTE: Set angle pin to release .020 from full stroke. Striker will snap to full stroke to assure re-entry clearance of angle pin.

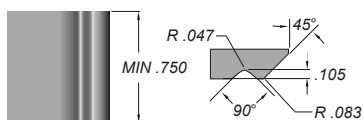


SLK-25-HH Rated to carry a weight up to 25 pounds. 100% interchangeable with SLK-25A.

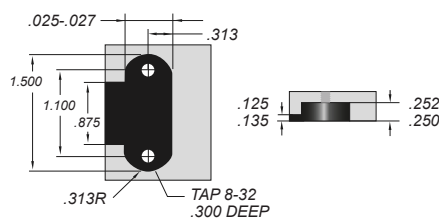


INSTALLATION – LOCK

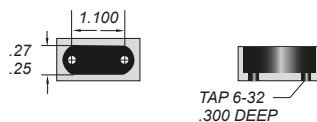
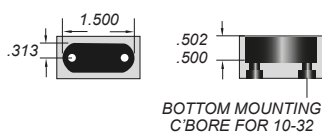
OPTION A MACHINED INTO SLIDE



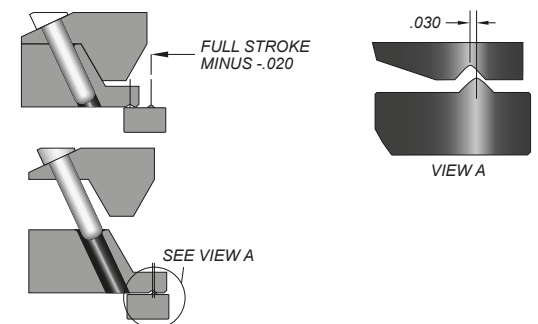
OPTION B LOCK INSERT



INSTALLATION – BODY



DESIGN GUIDELINES

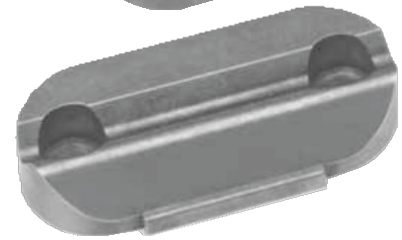


NOTE: Set angle pin to release .020 from full stroke. Striker will snap to full stroke to assure re-entry clearance of angle pin.

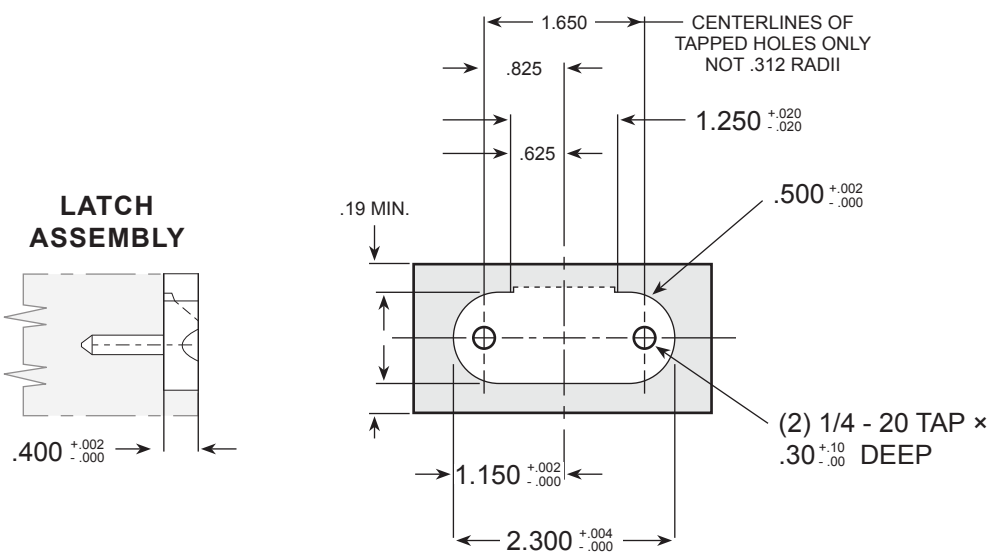
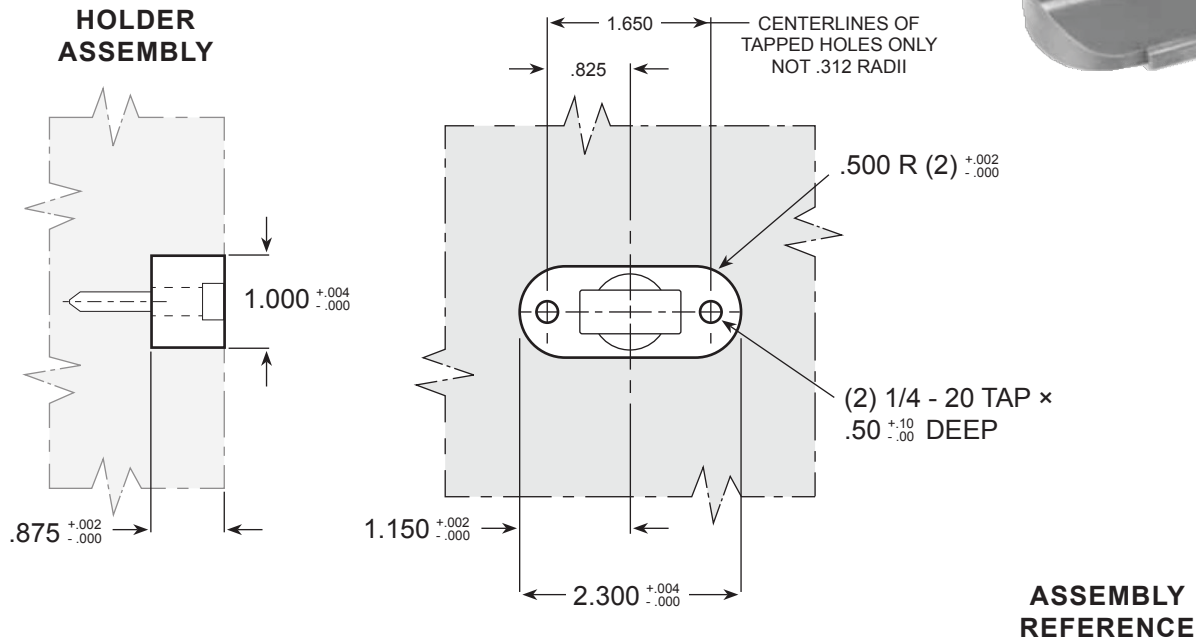
SLIDE LATCH

MACHINING DATA

Slide-Latch model SLK-50HH is rated to carry a weight of up to 50 pounds. Ideal for die cast mold slide applications. Multiple Slide-Latches can be easily machined and mounted in mold slides for higher load retentions.



SLK-50HH



The latch is usually mounted into the slide because of normal space limitations and requirements. This is not a rule though, and the designer may locate the various components to best suit the application.